

MLS STATISTICS for November 2013

Data for Sacramento County and the City of West Sacramento



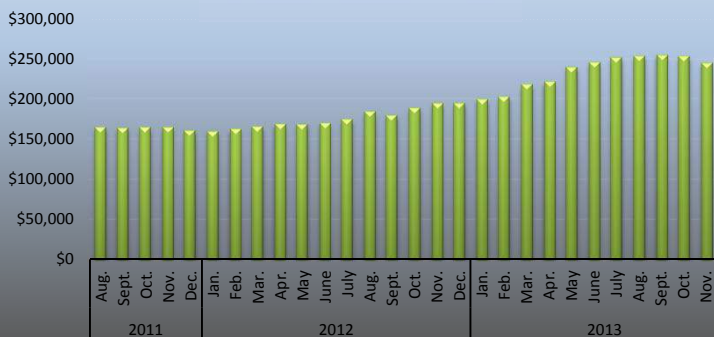
SINGLE FAMILY HOME RESALES

| Monthly Statistics | Current Month | % of Total Sales | Last Month | Change | % of Total Sales | Last Year | % of Total Sales | Change |
|------------------------------------|-----------------------------|------------------|-----------------------------|--------|------------------|-----------------|------------------|--------|
| Listings Published this Month | 1,417 | | 1,993 | -28.9% | | 1,455 | | -2.6% |
| Active Listing Inventory † | 2,197 | | 2,659 | -17.4% | | 1,401 | | 56.8% |
| Active Short Sale (included above) | 198 | | 202 | -2.0% | | 161 | | |
| Pending Short Lender Approval | 580 | | 707 | -18.0% | | 1,940 | | -70.1% |
| Pending Sales This Month | 908 | | 1,079 | -15.8% | | 1,006 | | -9.7% |
| Number of REO Sales | 51 | 4.4% | 74 | -31.1% | 5.3% | 176 | 11.6% | -71.0% |
| Number of Short Sales | 127 | 11.0% | 157 | -19.1% | 11.3% | 543 | 35.7% | -76.6% |
| Equity Sales** | 973 | 84.5% | 1,155 | -15.8% | 83.3% | 801 | 52.7% | 21.5% |
| Total Number of Closed Escrows | 1,151 | 100.0% | 1,386 | -17.0% | 100.0% | 1,520 | 100.0% | -24.3% |
| Months Inventory | 1.9 Months | | 1.9 Months | 0.0% | | 0.9 Months | | 111.1% |
| Dollar Value of Closed Escrows | \$322,544,195 | | \$379,293,530 | -15.0% | | \$329,212,331 | | -2.0% |
| Median | \$245,000 | | \$253,500 | -3.4% | | \$195,000 | | 25.6% |
| Mean | \$280,230 | | \$273,463 | 2.5% | | \$216,587 | | 29.4% |
| Year-to-Date Statistics | 01/01/13 to 11/30/13 | | 01/01/13 to 11/30/13 | | | 1/1/2012 | | |
| | SAR monthly data, compiled | | MetroList YTD data | | | 11/30/2013 | | Change |
| Number of Closed Escrows | 15,735 | | 16,263 | | | 17,662 | | -10.9% |
| Dollar Value of Closed Escrows | \$4,160,355,221 | | \$4,281,012,604 | | | \$3,507,579,928 | | 18.6% |
| Median | \$236,000 | | \$236,000 | | | \$175,000 | | 34.9% |
| Mean | \$263,236 | | \$263,236 | | | \$200,065 | | 31.6% |

Sales Volume



Median Sales Price



Inventory Volume



† Includes: Active, Active Release Clause, Active Short Sale, Active Short Sale Contingent, Active Court Approval and Active Court Contingent listings

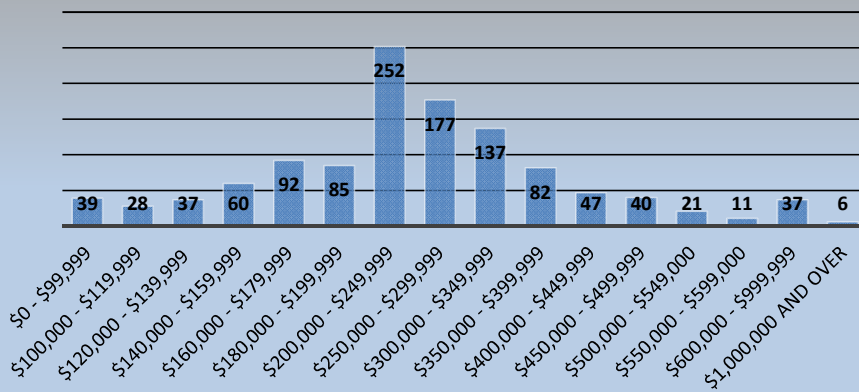
** Owner Equity Sales, previously identified as Conventional Sales, represents all sales other than short sales or lender owned properties. The name has been changed to avoid confusion with sales involving conventional financing for the new buyer

MLS STATISTICS for November 2013

Data for Sacramento County and the City of West Sacramento

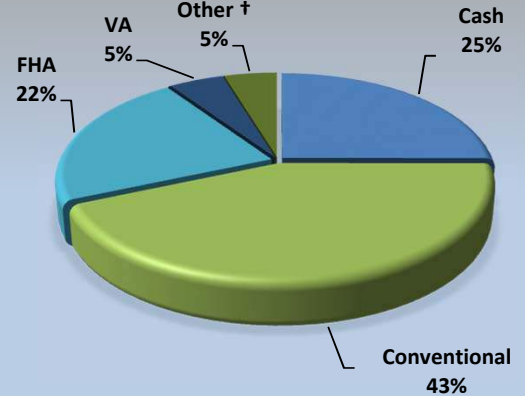
BREAKDOWN OF SALES BY PRICE

1 House on Lot Total: 1,151

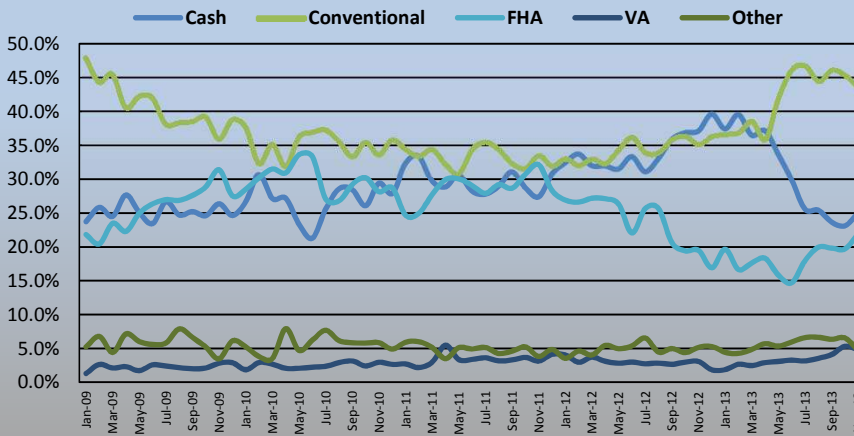


Type of Financing/Days on Market

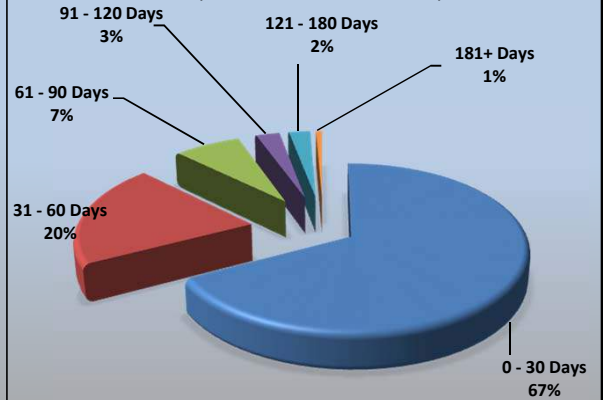
TYPE OF FINANCING (1 House on Lot/Condo)



Types of Financing Historical (% of Sales)



DAYS ON MARKET (1 House on Lot/Condo)



| Type of Financing (SFR, condo, PUD only) Financing Method | Current Month | | Previous Month | | LENGTH OF TIME ON MARKET | | | | |
|---|---------------|---------------|----------------|---------------|---------------------------------|--------------|---------------|---------------|----------------|
| | # of Units | % of Total | # of Units | % of Total | (SFR & Condo) Days on Market | # of Units | % of Total | | |
| | | | | | | | Current Month | Last 4 Months | Last 12 Months |
| Cash | 315 | 25.0% | 359 | 23.9% | 0 - 30 | 845 | 67.2% | 73.4% | 76.5% |
| Conventional | 547 | 43.5% | 694 | 46.1% | 31 - 60 | 254 | 20.2% | 16.5% | 13.0% |
| FHA | 276 | 21.9% | 309 | 20.5% | 61 - 90 | 90 | 7.2% | 5.7% | 5.0% |
| VA | 61 | 4.8% | 83 | 5.5% | 91 - 120 | 32 | 2.5% | 2.2% | 2.3% |
| Other † | 59 | 4.7% | 59 | 3.9% | 121 - 180 | 29 | 2.3% | 1.5% | 1.9% |
| Total | 1,258 | 100.0% | 1,504 | 100.0% | 181+ | 8 | 0.6% | 0.6% | 1.3% |
| | | | | | Total | 1,258 | 100.0% | 100.0% | 100.0% |

* half-plex, 2-on-1, mobile home

† includes: cal vet, contract of sale, creative, farm home loan, owner financing.

Median DOM: 17
 Average DOM: 29
 Average Price/Square Foot: \$163.9

This representation is based in whole or in part on data supplied by MetroList. MetroList does not guarantee, nor is it in any way responsible for, its accuracy. Data maintained by MetroList does not reflect all real estate activity in the market. All information provided is deemed reliable, but it is not guaranteed and should be independently verified. For the most current statistical information, visit [www.sacrealtor.org / public-affairs / statistics](http://www.sacrealtor.org/public-affairs/statistics).

Based on Multiple Listing Service data from MetroList. © 2013 SAR.

Compiled monthly by Tony Vicari, Community Relations Manager, Sacramento Association of REALTORS® | www.sacrealtor.org | 916.437.1205